



Products



Type I Solution



SkimStone Type I Solution is a proprietary blend of acrylic resins formulated to bond with the SkimStone Powder to create Hybridized Portland Cement. The Type I Solution serves as the tint base for color mixing. The water base formula promotes easy clean up. Available in 1 and 5 gallon pails.

Powder



SkimStone Powder is a proprietary mixture of ingredients developed specifically for use with SkimStone Type I Solution to create Hybridized Portland Cement. This extraordinary product provides exceptional adhesion to most surfaces with incredible flexibility, durability and versatility of design. Available in 7 and 30 lb pails.

ColorPaks

SkimStone ColorPaks come in 17 exciting ready-to-use colors. Each color can be used in different strengths to create an endless variety. For a rich, dark color use up to 2 ColorPaks (8 oz) per gallon of Type I Solution. Or, use a partial ColorPak to create a beautiful pastel shade. ColorPaks can also be intermixed to formulate original one-of-a-kind colors.

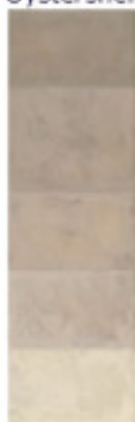
Mocha



Winter Olive



Oystershell



Deep Slate



Yellowstone



Florentine Clay



Minoan Red



Eggplant



Rainy Day Blue



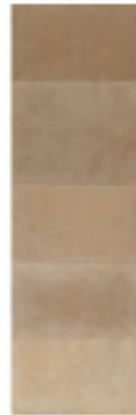
Forest Fern



Classic Black



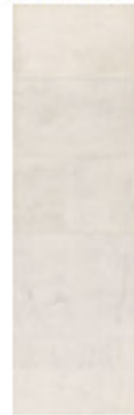
Morocco Sand



Peacock Green



Arctic White



Sapphire Blue



Butterscotch



Dark Chocolate



Sealer



SkimStone Protective Sealer is a water base urethane coating that brings out the distinctive color and texture of SkimStone and adds a beautiful sheen. A minimum of two coats is recommended for providing extra protection and durability to your SkimStone surface. If a higher gloss is desired, up to four coats may be used. Available in quart or gallon containers.

Bonding Primer



SkimStone Bonding Primer is for use on non-porous substrates. It provides inter-coat adhesion plus a textured surface to promote high-adhesion with the SkimStone topcoat. This product was developed for use on plastic laminate (Formica®) countertops. However, it is also appropriate to use the Bonding Primer on concrete floors where surface prep is needed but where it is impossible to use diamond grinders or shot blasting equipment. **CAUTION: this is not meant to replace mechanical prep in any other situation!** Available in 1 and 5 gallon containers.

Cleaner



SkimStone Cleaner is a mild, safe solution that will help maintain a beautiful, clean floor. Just spray directly on the floor and wipe immediately with a clean cloth. The neutral pH and special biodegradable formula is perfect for cleaning other hard surfaces too.

Introductory Video



This Introductory Video, featuring SkimStone Specialist Heather Nicholson, will show you how easy it is to transform an ordinary concrete floor into a unique design element.